

Mermade™



VIEW INSTRUCTIONS
& REGISTER
WARRANTY

CONSULTER LES INSTRUCTIONS ET
ENREGISTRER LA GARANTIE



MINI FLAT IRON MANUAL

hello@mermadehair.com

[@mermade.hair](https://twitter.com/mermade.hair) [mermadehair.com](https://www.mermadehair.com) [#mermadehair](https://www.instagram.com/mermadehair)



**Thank you for purchasing a
Mermade. We hope you love it!**

We make tools and products that
change the **hair game**. We are a
team of hair enthusiasts inspiring a
new generation of **hairstylists**,
stylists and the **everyday**
humans. Now, we are creating the
next **game-changing** hair tools
and products.

Merci d'avoir acheté un Mermade. Nous espérons que vous l'adorerez !
Nous créons des outils et des produits qui révolutionnent le monde de la coiffure. Nous
sommes une équipe de passionnés de cheveux inspirant une nouvelle génération de
coiffeurs, stylistes et de personnes du quotidien. Aujourd'hui, nous concevons les
prochains outils et produits capillaires révolutionnaires.

Mermade™

MERMADE HAIR PTY LTD 1/649 BEAUFORT ST, MT LAWLEY, WA, AUSTRALIA 6050

QUESTIONS OR COMMENTS:

E: HELLO@MERMADEHAIR.COM

W: WWW.MERMADEHAIR.COM

PH: (08) 6118 8408

MERMADE EURP BV, KROONWIEL 2, 6003BT WEERT, NETHERLANDS

Mermaid™

**STRAIGHT
& SLEEK STYLE**
STYLE LISSE & ÉLÉGANT

CERAMIC BARREL
CYLINDRE EN CÉRAMIQUE

**COMPACT &
LIGHTWEIGHT**
COMPACT ET LÉGER

180-SECOND HEAT-UP TIME
TEMPS DE CHAUFFE DE 120 SECONDES

LONG 2M CORD
CORDON LONG DE 2M

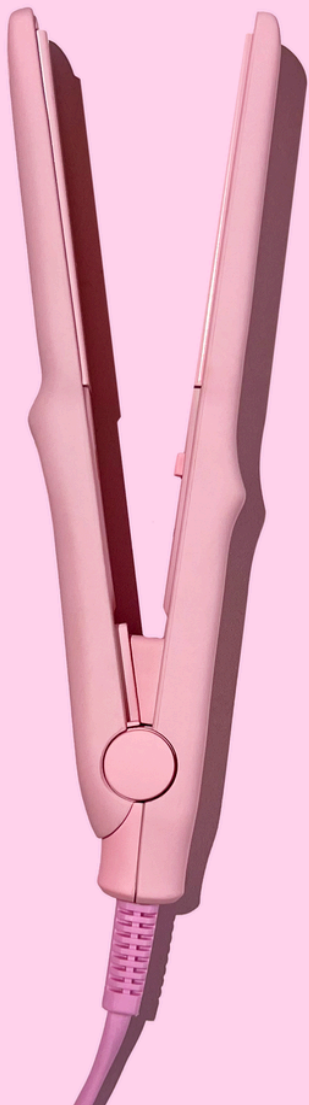


**VOLUMINOUS
WAVES & CURLS**
ONDULATIONS & BOUCLES
VOLUMINEUSES

IONIC TECHNOLOGY
TECHNOLOGIE IONIQUE

2-YEAR WARRANTY
2 ANS DE GARANTIE

WORLDWIDE
UNIVERSAL VOLTAGE
TENSION UNIVERSELLE







THIS MANUAL PROVIDES SAFETY INSTRUCTIONS, DIRECTIONS AND CARE INSTRUCTIONS. PLEASE STORE SAFELY.

PRODUCT: Mini Flat Iron

MODEL NUMBER/S: MH9030 MH9031 MH9032 MH9033

TEMPERATURE: 200°C / 390°F

WATTAGE/VOLTAGE: AC, 100V - 240V, 50Hz - 60Hz, 25W

OPERATING INSTRUCTIONS

- Insert the power plug into the wall socket. Switch the power button to "on" to turn the tool on. The default temperature is 200°C / 390°F
- Ensure hair is dry and protected with a thermal spray.
- Section your hair into pieces 1-2 inches thick so that the hair can easily pass through the plates.
- Clamp the hair between the plates and glide it through the hair to straighten. Alternatively, angle and rotate the tool to create waves and curls.
- Switch the power button to "off" to turn the tool off. Once completely cool, store it in a safe place.

WARNING: Always do a test 1cm section at the back of your hair to ensure the proper setting for your hair type, to ensure the tool is working correctly and you understand how it functions. Place on a thermal/heat resistant surface.

AS WITH MOST ELECTRICAL MACHINES, ELECTRICAL PARTS ARE ELECTRICALLY LIVE EVEN WHEN THE SWITCH IS OFF. TO REDUCE THE RISK OF BURNS, FIRE, ELECTRIC SHOCK OR INJURY TO PERSONS:

- Always unplug the appliance immediately after using it. An appliance should never be left unattended when it is plugged in.
- Do not use it while bathing or sleeping.
- Do not place or store the machine where it can fall or be pulled into a tub or sink.
- Do not place in or drop in water or any other liquid.
- If the tool falls into water, unplug it immediately. Do not reach into the water.
- Use this appliance only for its intended use as described in this manual. Do not use attachments not recommended by the manufacturer.
- Always place the appliance on a heat-resistant, stable flat surface.
- Never operate this appliance if it has a damaged cord or plug, if it is not working properly, if it has been dropped or damaged, or if it has been dropped into water.
- Keep cord away from the heated surfaces. Do not wrap the cord around the appliance.
- Do not use an extension cord.
- This appliance can be used by children aged from 16 years and above and persons with reduced physical, sensory or mental capabilities or lack of experience and knowledge if they have been given supervision or instruction concerning use of the appliance in a safe way and understand the hazards involved. Children shall not play with the appliance. Cleaning and user maintenance shall not be made by children without supervision.

ATTENTION

- If the supply cord is damaged, it must be replaced by the manufacturer, its service agent or similarly qualified persons in order to avoid a hazard.
- **WARNING:** Do not use this appliance near bathtubs, showers, basins or other vessels containing water.
- Keep the appliance out of reach from young children, particularly during use and cool down.
- Never leave the appliance unattended when it is connected to a power supply. Always place the appliance on a heat-resistant, stable flat surface.
- Do not use it on wet, damp or synthetic hair.
- For additional protection, the installation of a residual current device (RCD) having a rated residual operating current not exceeding 30mA is advisable in the electrical circuit supplying the bathroom. Ask your installer for advice.
- Always do a strand test before using on your hair as heat can affect some hair colour, in particular on freshly coloured or toned hair

MAINTENANCE



- To clean the unit, be sure the unit is cool and unplugged. Wipe the handle and plates with a damp cloth. No other maintenance is necessary.
- Do not attempt to repair the appliance yourself. This appliance has no user serviceable parts.
- Unplug the unit whenever it is not in use. Allow it to cool, then store it out of reach of children in a safe, dry location.
- Never wrap the cord around the appliance, since this will cause the cord to wear prematurely and break, thus voiding warranty. Handle the cord carefully and avoid jerking, twisting, or straining it, especially at plug connections.

SAFETY & RECYCLING

- Take extra care to ensure the hot plates do not contact skin or eyes.
- Use a mirror when using the appliance to assist with safe usage.
- Do not place the tool on surfaces that are not heat resistant.
- Polythene bags over the product and packaging may be dangerous. To avoid the danger of suffocation, keep away from babies and children. These bags are not toys.
- This appliance may not be treated as household waste. It should be handed to an appropriate collection point for the recycling of Electrical and Electronic equipment. By ensuring this product is disposed of correctly, you will help prevent potential negative consequences for the environment and human health, which could otherwise be caused by inappropriate waste handling of this product. For more detailed information about the recycling of this product, please contact your local council office or your household waste disposal service. For EU/UK disposal WEEE (Waste from Electrical and Electronic Equipment) requires that used household appliances are not disposed of in the normal municipal waste stream. Use appliances must be collected separately in order to optimise the recovery and recycling of the materials from which they are made and to reduce the impact on human health and the environment.

LIMITED 2-YEAR GLOBAL WARRANTY

Mermade Hair warrants this product against any defects that are due to faulty material or workmanship for a two-year period from the original date of consumer purchase. This warranty does not include damage to the product resulting from accident or misuse.

If the product should become defective within the warranty period, Mermade Hair will replace the item. Email hello@mermadehair.com for Warranty issues and provide the batch code found on the power cord. This warranty does not cover products damaged by the following:

- Accident, misuse, abuse or alteration of the product
- Servicing by unauthorized persons
- Use with unauthorized accessories
- Connecting it to incorrect current and voltage
- Wrapping cord around appliance causing premature wear & breakage
- Any other conditions beyond our control



MERMADE HAIR SHALL NOT BE RESPONSIBLE FOR ANY INCIDENTAL, SPECIAL OR CONSEQUENTIAL DAMAGES RESULTING FROM THE USE OF THIS PRODUCT. ALL IMPLIED WARRANTIES, INCLUDING BUT NOT LIMITED TO IMPLIED WARRANTIES OF FITNESS AND MERCHANTABILITY, ARE LIMITED IN DURATION TO TWO YEARS FROM DATE OF ORIGINAL PURCHASE. KEEP ORIGINAL SALES RECEIPT AS PROOF OF PURCHASE FOR WARRANTY PURPOSES OR REGISTER YOUR WARRANTY ONLINE.

This warranty gives you specific legal rights and you may also have other rights which vary from state to state or province to province. Some states do not allow that exclusion or limitation of incidental, special, or consequential damages.

SAVE THESE INSTRUCTIONS



Mermade™

MANUFACTURER:
MERMADE HAIR PTY LTD

1/649 BEAUFORT ST. MT LAWLEY, WA, AUSTRALIA 6050

MERMADE EURP BV
KROONWIEL 2. 6003BT WEERT, NETHERLANDS

QUESTIONS OR COMMENTS:

E: HELLO@MERMADEHAIR.COM

W: WWW.MERMADEHAIR.COM

PH: (08) 6118 8408