


Mermaid
HAIR



SPIN AUTOMATIC CURLER



**Thank you for purchasing a
Mermade. We hope you love it!**

We make tools & products that
change the **hair game**. We are a
team of hair enthusiasts inspiring a
new generation of **hairedressers,**
stylists & the **everyday human**.

Now, we're creating the next
game-changer hair tools &
products. We lead the pack. We
change the game. We create the
trends.

Get **10% off** your next order with
code **THANKYOU10**

Mermade
HAIR

Get to know your Mermade

Are you ready for the best hair of your life?

Cool Tip

Allows for easy styling

Advanced technology

State of the art heat technology heats up extremely fast and decreases unnecessary damage to the hair

25mm Ceramic Tourmaline Barrel

Advanced ceramic ionic plates ensure waves are long-lasting + shiny

Dual Rotation

360° clockwise & anti-clockwise rotation to help with even curls & waves

Safety

Auto-shut off after 60 minutes + safety stand

Clamp

Long clamp for easy styling

Set Button

Turns the barrel back to the starting position

Temperature control

100°C/210°F -
220°C/430°F

Power Button

On/Off function

Cord

2.5m salon quality swivel cord



How to use the Spin Automatic Curler

STEP ONE

Connect the plug to the power supply. Press the ON/OFF button at the bottom of the tool to turn the MERMADE Spin 'ON'. The '-' and '+' buttons indicate temperature control, with the right button increasing the temperature and left button decreasing the temperature.

STEP TWO

Choose the temperature according to your hair type. We suggest starting at the lowest temperature and changing as per needed. Fine or damaged hair should stay at a lower temperature and thick or coarse hair will generally need to be at a higher temperature.

STEP THREE

Ensure your hair is dry and clamp towards the bottom of the barrel depending on hair length. Press 'L' to curl your hair in a left rotating direction and 'R' to curl your hair in a right rotating direction. Hold down the 'L' or 'R' button down to spin the barrel. **BE CAREFUL TO TAKE YOUR FINGER OFF THE BUTTON BEFORE YOU APPROACH THE HEAD/SCALP AREA.**

The barrel will continue to spin if you keep your finger on the button. You can also wrap the hair around the tool without using the rotational buttons like a normal curling wand. Press 'Set' button to reset clamp. 'Set' turns the barrel back to the starting position Repeat on whole head.

STEP FOUR

Hold for 3-10 seconds depending on how defined you want your curls. Unwrap the hair or release the clamp to remove the hair from the barrel. Repeat the same action on the rest of your hair. Smaller sections create a tighter curl and bigger sections create a more loose curl. Brush out for an on-trend look. It is recommended to change the direction of the curl on either side of the head.

STEP FIVE

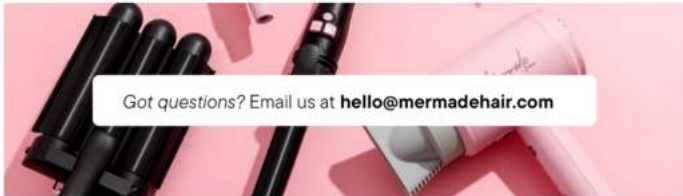
Wait for hair to cool then brush or comb the curls out for waves. After using, turn the power off and ensure it cools down before safely storing away.



The Mermade Spin has a motorised function that, if impaired could cause serious pain or burns to the scalp. If the Spin continues to rotate once you have removed your finger from the button, immediately release the clamp, slide hair out and turn off.

When not in use, turn off and unplug the curling iron. Allow the iron to cool, and store out of reach of children in a safe, dry location.

To clean the unit, be sure the unit is cool and unplugged. Wipe the handle and barrels with a damp cloth.



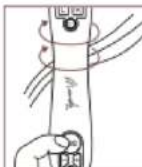
Got questions? Email us at hello@mermadehair.com

HOW TO STYLE WITH MERMADE SPIN ROTATING HAIR CURLER



STEP 1

Open clamp and secure ends of hair towards the bottom of the barrel.



STEP 2

Hold 'L' or 'R' to start rotation. Release button to stop rotation.



STEP 3

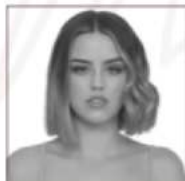
Hold for 3-10 seconds. Open clamp to release hair.



STEP 4

Press 'Set' button to reset clamp. Repeat on whole head.

THREE CURLS. ONE TOOL.



VERTICAL HOLD

Textured Waves



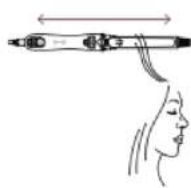
DIAGONAL HOLD

Textured Waves



HORIZONTAL HOLD

Sleek Waves



**IMPORTANT SAFETY INSTRUCTIONS.
BEFORE USING THIS APPLIANCE READ ALL
INSTRUCTIONS AND CAUTIONARY
MARKINGS.**

PRODUCT: Spin Automatic Curler 25mm
Pink/Black MODEL NUMBER/S: MH1011,
MH1014, MH1012, MH1013, MH1031, MH1032,
MH1033, MH1034

MATERIAL: ABS NANO-TITANIUM CERAMIC

COATING HEATER TYPE: DOUBLE PTC

TEMPERATURE DISPLAY: LCD

MIN TEMP: 100°C/210°F

MAX TEMP: 220°C/430°F

VOLTAGE: 100-240V, 50-60Hz, 45-65W
(UNIVERSAL VOLTAGE) **LINE LENGTH:** 2.5M
360 DEGREE ROTATING POWER CORD

**AS WITH MOST ELECTRICAL MACHINES,
ELECTRICAL PARTS ARE ELECTRICALLY LIVE
EVEN WHEN THE SWITCH IS OFF. TO
REDUCE THE RISK OF BURNS, FIRE,
ELECTRIC SHOCK OR INJURY TO PERSONS:**

1. Always unplug appliance immediately after using. An appliance should never be left unattended when it is plugged in.
2. Do not use while bathing or sleeping.
3. Do not place or store the machine where it can fall or be pulled into a tub or sink.
4. Do not place in or drop in water or any other liquid.
5. If the machine falls into water, unplug it immediately. Do not reach into the water.
6. Use this appliance only for its intended use as described in this manual. Do not use attachments not recommended by manufacturer.
7. Never operate this appliance if it has a damaged cord or plug, if it is not working properly, if it has been dropped or damaged, or if it has been dropped into water.
8. Keep cord away from the heated surfaces. Do not wrap the cord around the appliance.
9. Do not use an extension cord.



ATTENTION

1. This appliance is not intended for use by persons under the age of 12 years old, unless supervised by an adult.
2. It is recommended this appliance should not be used by persons who have reduced physical, sensory or mental capabilities, or lack of experience and knowledge, unless they are supervised by a person responsible for their safety.
3. If the supply cord is damaged, it must be replaced by the manufacturer, its service agent or similarly qualified persons in order to avoid a hazard.
4. Do not use this appliance near bathtubs, showers, basins or other vessels containing water.
5. Keep appliance out of reach from young children, particularly during use and cool down.
6. Never leave appliance unattended when it is connected to a power supply. Always place the appliance with the safety stand on a heat-resistant, stable flat surface.
7. Do not use on wet, damp or synthetic hair.
8. For additional protection, the installation of a residual current
9. device (RCD) having a rated residual operating current not exceeding 30mA is advisable in the electrical circuit supplying the bathroom. Ask your installer for advice.
10. Always do a strand test before using on your hair as heat can affect some hair colour, in particular on freshly coloured or toned hair.

SAFETY

- Take extra care to ensure the hot plates do not come into contact with the skin, eyes or body.
- Use a mirror when using the appliance to assist with safe usage.
- Do not place tool on surfaces that are not heat resistant.
- Polythene bags over the product and packaging may be dangerous.
- To avoid danger of suffocation, keep away from babies and children. These bags are not toys.

- This appliance may not be treated as household waste. It should
- be handed to an appropriate collection point for the recycling
- of Electrical and Electronic equipment. By ensuring this product
- is disposed of correctly, you will help prevent potential negative consequences for the environment and human health, which could otherwise be caused by inappropriate waste handling of this product.
- Do not attempt to repair the appliance yourself. This appliance has no user serviceable parts.

WARNING: POSSIBLE ELECTRIC SHOCK. DO NOT IMMERSE IN WATER OR USE WHILE BATH

LIMITED TWO YEARS WARRANTY

Mermade Hair warrants this product against any defects that are due to faulty material or workmanship for a two- year period from the original date of consumer purchase. This warranty does not include damage to the product resulting from accident or misuse. If the product should become defective within the warranty period, we will replace it free of charge. Contact returns@mermadehair.com for Warranty issues.

This warranty does not cover products damaged by the following:

- Accident, misuse, abuse or alteration of the product
- Servicing by unauthorized persons
- Use with unauthorized accessories
- Wrapping cord around appliance causing premature wear & breakage
- Any other conditions beyond our control

MERMADE HAIR SHALL NOT BE RESPONSIBLE FOR ANY INCIDENTAL, SPECIAL OR CONSEQUENTIAL DAMAGES RESULTING FROM THE USE OF THIS PRODUCT. ALL IMPLIED WARRANTIES, INCLUDING BUT NOT LIMITED TO IMPLIED WARRANTIES OF FITNESS AND

MERCHANTABILITY, ARE LIMITED IN DURATION TO TWO YEARS FROM DATE OF ORIGINAL PURCHASE. KEEP ORIGINAL SALES RECEIPT AS PROOF OF PURCHASE FOR WARRANTY PURPOSES OR REGISTER YOUR WARRANTY ONLINE.

This warranty gives you specific legal rights and you may also have other rights which vary from state to state or province to province. Some states do not allow that exclusion or limitation of incidental, special, or consequential damages.

REGISTER YOUR WARRANTY AND REVIEW INSTRUCTIONS HERE: <https://qrco.de/bbSv60>



Mermade
HAIR

Questions or comments:

Manufacturer:

Mermade Hair Pty Ltd Email
hello@mermadehair.com
www.mermadehair.com
 (08) 6118 8408
 1/649 Beaufort St, Mt Lawley,
 WA, 6050, Australia

M



Mermade
HAIR

Got questions? Email us at hello@mermadehair.com
[@mermade.hair](https://www.instagram.com/mermade.hair) [mermadehair.com](https://www.mermadehair.com) [#mermadehair](https://www.facebook.com/mermadehair)